

User Guide

AroCup

360°
AROMATICA
LUXURIOUS SCENT SURROUNDING

A decorative background consisting of several overlapping, wavy, light gray bands that create a sense of movement and depth. The bands are semi-transparent and flow across the middle of the page.

Scent
is the
revival
memories of
and.
desire

Contents

6	Product description
7	User Guide
9-8	Function description
10	Cautions
11	Troubleshooting

Enhance Your Atmosphere

Style your home with scent

Scent is the first thing people notice when they enter your home or business. Now you can style your home ambience with your favorite aroma oils using the most advanced scent technology. The AroSlim will forever change the way you use scent in your home or business.

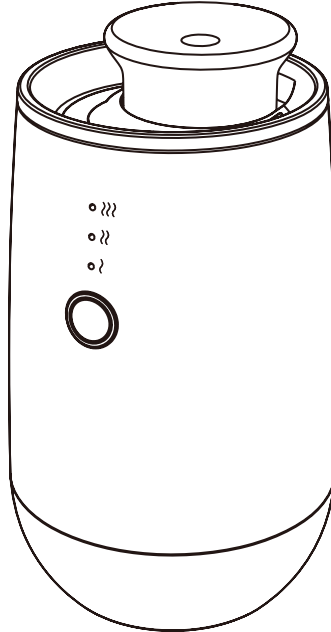
With the AroSlim, you can create and control an exquisite scent experience adjusted perfectly to match the size and conditions of a room. You can also change the scent depending on your mood, occasions and time of day.

The AroSlim houses cold-air nebulization technology to provide the most pure and scented environment. Our nebulization technology preserves the integrity of our premium aroma oils creating a unique and memorable experience.

Cold-air, nebulization is an easy, heat free way to diffuse Aromatica360's aroma oil blends. Aromatica360 diffusers elevate your ambience and home decor with wonderful aromas to suit your everyday lifestyle and special occasions. Aromatica360 truly creates a unique and inviting ambience in your home or business.

Product Manual

AroCup



Power: 3W

Materials: ABS+PP

Dimension: $\phi 76 \times 131$ mm

Input Voltage: 5V $\overline{\text{=}}$ 0.6A

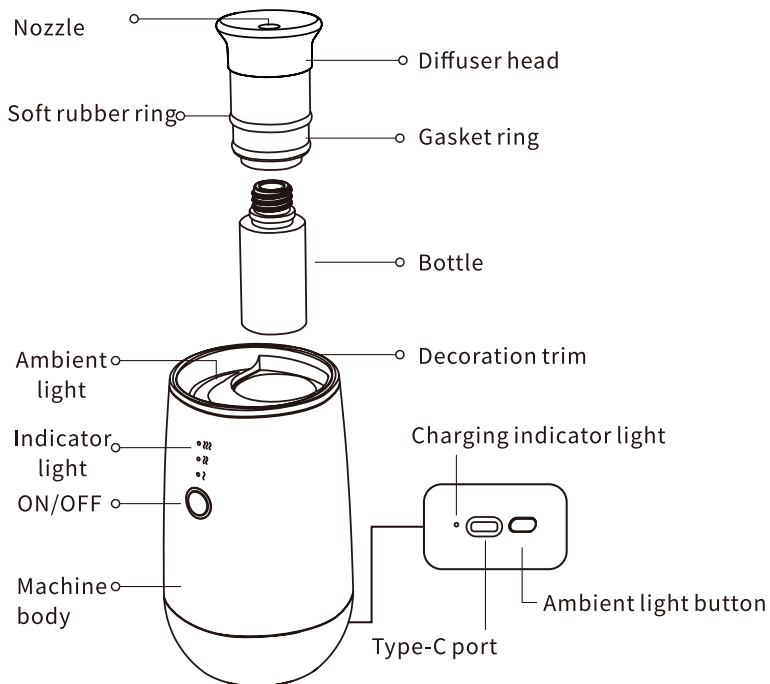
Coverage: $15\text{m}^2/45\text{m}^3/1600\text{ft}^3$

Li-battery: 2000mAh

N.W: 300g

Bottle: 5/10/15ml

Product Description:



Built-in Battery



Auto Shut-off



Colorful Lights



Machine



Bottle X2

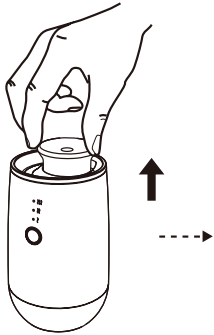


USB cable

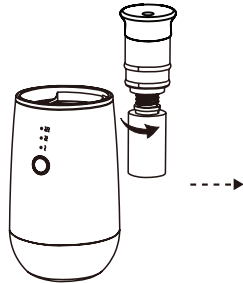


Manual

User Guide:



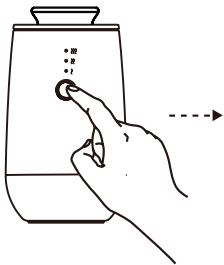
1. Take out the diffuser head



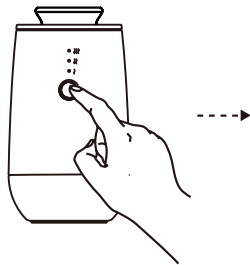
2. Turn the bottle counterclockwise



3. Press down the diffuser head



4. Long press to switch the machine



5. Click to change the grades



6. Click to switch the light color

Function Description:

Charging mode

When charging, the indicator light is always red, and when fully charged, the green light is always on.

(Note: it refers to the charging indicator on the back)

charge time:about 4h(When the battery is exhausted, it needs to be charged for at least 5 minutes before it can work again.)

Battery duration:about 24h(working at G1)

Auto power off

When there is no operation, the device will automatically power off after 12 hours.

Ambient light

Total 9 light colors, they are red, orange, yellow, green, cyan, blue, purple, pink, white.

Diffuser head

Applied to most 5/10/15ml bottles in the market.

The Buttons

On/Off button: long press to switch the machine, short press to change grades.

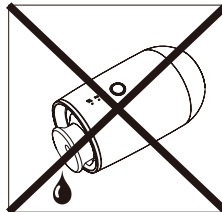
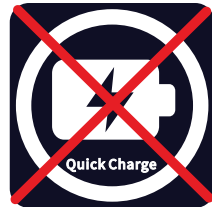
Ambient light button: Press to change the light color or turn off the light.

Grade	Working time(s)	Stop time(s)	Consumption(g/h)
G3	10s	60s	0.13
G2	10s	120s	0.07
G1	5s	150s	0.03

Cautions:

- ! 1. Please keep the machine vertical after installation.
Tilting or lying flatly may cause oil overflow. The machine efficiency may be affected if the circuit board is contaminated.
- ⚠ 2. Should not modify, dismantle or repair the machine arbitrarily.
Any malfunction occurs, please contact with relevant technician in time.
- ⚠ 3. Do not put the machine in a hot or humid place to avoid damage to the machine.
- ⚠ Do NOT use quick charger for device.
- ⚠ Do NOT use or store the device above 60°C.

Note: The machine should be kept vertically to avoid leakage and damage when working.



Trouble shooting:

Before asking to have the machine repaired, please try to diagnose the problem first following to bellow instructions.

Breakdown	Solution
Do not diffuse	<ul style="list-style-type: none">-The atomizing core may be blocked, please clean the impurities inside with alcohol or replace a new one.- Air pump may be damaged, please replace a new one.-The tube may be loose, please check and tighten it.
Weak diffuse	<ul style="list-style-type: none">-The atomizing core may be blocked, please clean the impurities inside with alcohol or replace a new one.-The gasket may be damaged or loose, please tighten it or replace a new one.-The tube may be loose, please check and tighten it.
Oil leakage	<ul style="list-style-type: none">-The bottle may be loose, please check and tighten it.-The gasket in the atomized head is damaged or loose, please tighten it or replace a new one.
Oil spill	<ul style="list-style-type: none">-The atomized head may be damaged, please replace a new one.-The machine is tilted or lie flat, please keep it upright.
Abnormal noise	<ul style="list-style-type: none">-The air pump may be loose, please check and tighten it.-The air pump may be damaged, please replace a new one.

360°
AROMATICA
LUXURIOUS SCENT SURROUNDING

aromatica360.COM

info@aromatica360.com