

User Guide

**AroMini**

A series of overlapping, wavy, semi-transparent white lines that flow across the middle of the page, creating a sense of movement and depth.

360°  
**AROMATICA**  
LUXURIOUS SCENT SURROUNDING

A decorative graphic consisting of several overlapping, wavy, light gray lines that flow horizontally across the middle of the page, behind the text.

*Scent*  
*is the*  
*revival*  
*memories* *of*  
*and.*  
*desire*

## Contents

ENHANCE YOUR ATMOSPHERE

DIAGRAM OF PARTS

QUICK START

WHERE TO PLACE

SETTING SCENT INTENSITY

INTENSITY CYCLES & CONSUMPTION

WARNINGS

TROUBLE SHOOTING

WARRANTY AND SUPPORT

# Enhance Your Atmosphere

Style your home with scent

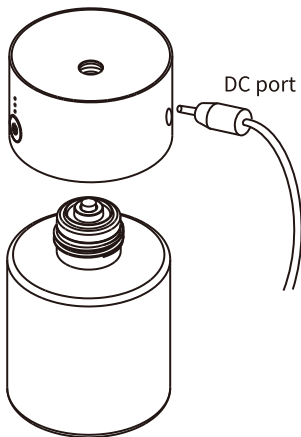
Scent is the first thing people notice when they enter your home or business. Now you can style your home ambience with your favorite Aromatica oils using the most advanced scent technology. The AroMini will forever change the way you use scent in your home or business.

With the AroMini, you can create and control an exquisite scent experience adjusted perfectly to match the size and conditions of a room. You can also change the scent depending on your mood, occasions and time of day.

## Diagram of Parts

- ○ ○ L1
- ● ○ L2
- ● ● L3

Indicator light  
Control button



Machine



Bottle



Cotton  
stick



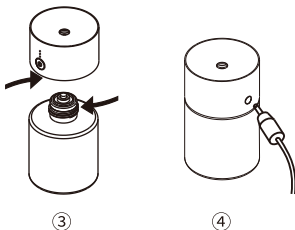
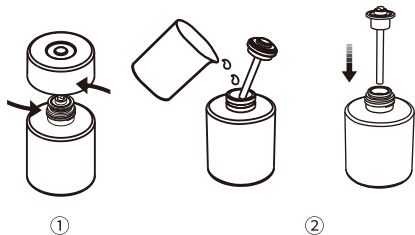
Cable



Manual

## Quick start

1. Unscrew the bottle and pull out the cotton stick and holder
2. Fill the bottle with fragrance, install the cotton stick and holder;
3. Screw the machine back on;
4. Long press the control button to turn the machine on, short press for level adjustment.



## Where to Place

### LOCATION

The AroMini is designed to be placed on a table-top, Cars cup holder, counter top or a shelf.

Do not place device on finely finished surface areas.

### SCENTING COVERAGE

The AroMini can be adjusted to scent an area ranging from 10 to 50 sq.ft (1 to 50sq.m)

### DEVICE LOCATION

An important element of your scenting experience is to properly position the device in the room to ensure optimal performance.

Choose the location where the Aromatica oil molecules can use the natural airflow in a room. This is particularly important with air-conditioned spaces. The best location for the AroMini is where there is good airflow.

Do not place the AroMini near an HVAC return grill, exhaust, fan, or vent. Setting near open windows will cause the scent to escape the space. Work with the natural airflow of the space.

Try a variety of locations and settings until you are happy with scent coverage. Give the AroMini a little time to adjust to the new location and setting before changing it again

## Setting Scent Intensity

Once the Aromatica360 Aromatica oil is placed in the device, basic operation is simply adjusting the scent level to match the room size, ambience or occasion. Simply turn the machine on using the intensity buttons. Starting at level 1, after a few minutes, you will experience the scent spreading around your space. If needed, adjust accordingly. Once you have chosen the right setting, you should only have to adjust slightly with different Aromatica oils.

Keep nose clear from the scent output when the device is operating. Instead, waft air towards nose to experience the full Aromatica oil scent.

When changing the scent level, give the AroMini some time to equalize the scent level throughout the space before you decide if you need to adjust.



## Intensity grade and consumption

Grade	Working time(s)	Interval time(s)	Oils(g/h) consumption
G1	5	300	0.18g/h
G2	5	180	0.33g/h
G3	5	90	0.55g/h

\*The above consumption data may vary depending on the different Aromatica oil

Please note that while the device is running the nebulization process, the intensity cycles turn on and off to ensure powerful scent coverage. The on/off cycle compared to a steady stream of scent allows the occupants of the space to notice the scent.

1. After installation, please keep the machine vertical. Tilt or lie flatly may cause oil overflow. The machine efficiency may be affected if the circuit board is contaminated.
2. Shall not modify, disassemble or repair the machine arbitrarily. Any failure happens, please contact relevant technician in time.
3. This product is only applicable to our provided fragrance. Do not add other essential oils to avoid damaging the machine; nor disassemble and clean it by yourself. The matched fragrance can be purchased separately for replacement.

**Attention:** The machine is NOT the lid, when it is working, the machine should be kept upright to avoid leaking and damage to the machine. Use the matched lid for sealing.

- Do NOT use quick charger for device.
- Do NOT use or store the device above 70°C



## WARNINGS

- Only use the power adapter supplied with the device.
- Never operate the diffuser if the power adapter is damaged.
- Do not use the diffuser if any part of the device is broken.
- NEVER attempt to service, disassemble, or repair the device in anyway, other than cleaning and refilling the Aromatica oil bottle.
- When moving the device always keep it upright, do not tilt and carry securely with both hands.
- Always place unit on a stable, level surface and ensure it is over 2' away from the ceiling.
- NEVER dilute oils with water or carrier oils.
- NEVER pour water in or on the device and never operate with wet hands.
- Do not cover the device with objects or material while in use.
- Ensure power adapter is never blocked when plugged in.
- Keep nose clear from the scent output at the top of the diffuser when the device is operating.
- ALWAYS keep out of reach of small children and pets.
- Store at room temperature 68-75 F (20-23 C), 30-35% Humidity

In the event of a problem or issue, please contact us at  
or [info@aromatica360.com](mailto:info@aromatica360.com)

## Trouble shooting

Before having the machine repaired, please try to diagnose the problem first with the bellow instructions

Symptom	Remedy
Does not diffuse	<ul style="list-style-type: none"><li>- Whether the machine is in "not working period". If yes, it won't spray.</li><li>- Check whether the air pump is damaged. If yes, replace it with a new one.</li></ul>
Spray little	<ul style="list-style-type: none"><li>- Check whether the gasket is damaged or loose. Please adjust it or replace it with a new one.</li><li>- Check whether the atomized core is plugged; clear it with alcohol or replace it with a new one</li></ul>
Oil spill	<ul style="list-style-type: none"><li>- Check whether the atomized head is damaged</li></ul>
Oil overflow	<ul style="list-style-type: none"><li>- Check whether the oil bottle is loose, please install it correctly</li><li>- Check whether the gasket of the atomized head is damaged; if yes, please replace it with another one.</li><li>- Please keep the machine vertical; Tilt or lie flatly will cause the oil overflow</li></ul>

<b>Symptom</b>	<b>Possible cause</b>	<b>Solution</b>
Diffuser does not connect to Scenting App.	<ol style="list-style-type: none"> <li>1. Someone else is connected via Bluetooth to your device.</li> <li>2. Phone is too far away from diffuser.</li> </ol>	Reset the diffuser by holding down the power button till you hear 2 beeps. Reconnect to Bluetooth via the app on your phone.
Diffuser is on but it is making a gurgling noise.	<ol style="list-style-type: none"> <li>1. The bottle is filled too high.</li> </ol>	<ol style="list-style-type: none"> <li>1. Make sure the oil does not exceed the max fill line.</li> </ol>
The diffuser turned off by itself, no blue light on the base, no intensity level showing.	<ol style="list-style-type: none"> <li>1. The diffuser is designed to cycle the pump on and off and mists intermittently.</li> <li>2. The time of the day is outside of the scheduled operating periods.</li> </ol>	<ol style="list-style-type: none"> <li>1. Turn your diffuser on and then wait a full cycle, 10 min. Diffuser light turns off during normal running cycle.</li> <li>2. Check scheduling in the Scenting App.</li> </ol>
Unusual or loud noise		Turn diffuser off and contact customer care <a href="mailto:Info@aromatica360.com">Info@aromatica360.com</a>
PLEASE Contact customer care for any questions or concerns that may arise.		

## Warranty and Support

All products designed by AromTech come with a 1-year limited warranty. Failure to use Aromatica360 branded oils may cause your diffuser to malfunction or not diffuse properly in which case warranty will be void. If you have any questions or issues please reach out to our customer care experts:

**[info@aromatica360.com](mailto:info@aromatica360.com)**

360°  
**AROMATICA**  
LUXURIOUS SCENT SURROUNDING

[aromatica360.COM](http://aromatica360.COM)

[info@aromatica360.com](mailto:info@aromatica360.com)