

User Guide

**AroMax Pro**

A series of overlapping, semi-transparent, wavy lines in shades of light gray and white, creating a sense of movement and depth across the lower half of the page.

360°  
**AROMATICA**  
LUXURIOUS SCENT SURROUNDING

A decorative background element consisting of several overlapping, wavy, light gray lines that flow horizontally across the middle of the page, creating a sense of movement and depth.

*Scent*  
*is the*  
*revival*  
*memories of*  
*and.*  
*desire*

## Contents

- 4 ENHANCE YOUR ATMOSPHERE
- 5 FEATURES & SPECIFICATIONS
- 6 TECHNOLOGY
- 7 DIAGRAM OF PARTS
- 8 QUICK START
- 9 WHERE TO PLACE
- 10 SETTING SCENT INTENSITY
- 11 INTENSITY CYCLES & CONSUMPTION
- 12 CLEANING THE DIFFUSER
- 13 APP CONTROL & QR CODE
- 14 WARNINGS
- 15-16 TROUBLE SHOOTING
- 17 WARRANTY AND SUPPORT

# Enhance Your Atmosphere

Style your home with scent

Scent is the first thing people notice when they enter your home or business. Now you can style your home ambience with your favorite Aromatica oils using the most advanced scent technology. The AroMax Pro will forever change the way you use scent in your home or business.

With the AroMax Pro, you can create and control an exquisite scent experience adjusted perfectly to match the size and conditions of a room. You can also change the scent depending on your mood, occasions and time of day.

The AroMax Pro houses cold-air nebulization technology to provide the most pure and scented environment. Our nebulization technology preserves the integrity of our premium Aromatica oils creating a unique and memorable experience.

Cold-air, nebulization is an easy, heat free way to diffuse Aromatica360's aroma oil blends. Aromatica360 diffusers elevate your ambience and home decor with wonderful aromas to suit your everyday lifestyle and special occasions. Aromatica360 truly creates a unique and inviting ambience in your home or business.

## Features

- Revolutionary Nebulizing technology
- Bluetooth Connectivity
- App control
- Uniform and consistent scent day after day
- Constructed from recycled aluminum
- Adjustable scent intensity
- Whisper-quiet operation
- No water
- No heat
- No residue

Dimension	152*150*664mm
Capacity	1000ml
Weight	7.2kg
Coverage	830m <sup>2</sup> / 2500m <sup>3</sup>
Power	10W
Voltage	DC12V

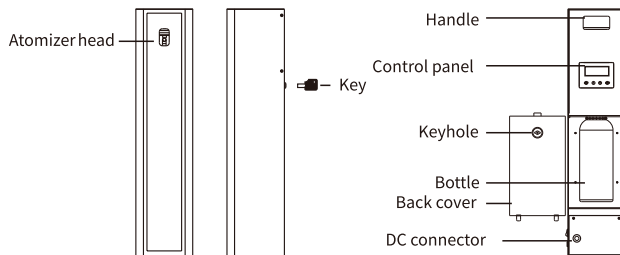
## Technology

Each of our fragrance nebulizers uses patented cold-air nebulizing technology to release nanoparticles into the air that leave behind no residue.

This technology preserves the integrity of our Aromatica oils to deliver pristine, evenly distributed scent without using heat or diluting the oils in water or alcohol.

Using only Aromatica360 Aromatica oil blends will guarantee the best performance of your diffuser. There is no need to mix or dilute with water, carrier oils or alcohol. Our scents are produced to be used in the diffuser without alteration. Simply fill the bottle with your favorite Aromatica360 Aromatica oils and set the intensity.

## Diagram of Parts



Plug



Bottle



Manual

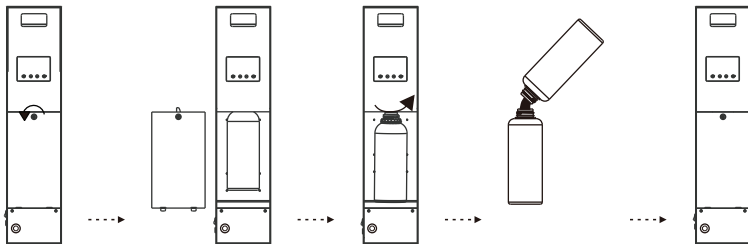


Key

### Usage of sealing tape:

1. Before replacing the atomizing core, wrap the sealing tape around the thread of the atomizing core, preferably 3-5 turns to prevent air leakage.
2. Before connecting the quick connector, wrap the sealing tape around the quick connector thread, preferably 3-5 turns to prevent air leakage

## Quick start



1. Open the door by key
2. Take of the back cover
3. Twist the bottle

4. Fill the bottle by essential oil
5. Fix the bottle in the machine machine



## Where to Place

### LOCATION

The AroMax Pro is designed to be placed Large Places and open areas.

### SCENTING COVERAGE

The AroMax Pro can be adjusted to scent an area ranging from 10 to 50 sq.ft (1 to 50sq.m)

### DEVICE LOCATION

An important element of your scenting experience is to properly position the device in the room to ensure optimal performance.

Choose the location where the Aromatica oil molecules can use the natural airflow in a room. This is particularly important with air-conditioned spaces. The best location for the AroMax Pro is where there is good airflow.

Do not place the AroMax Pro near an HVAC return grill, exhaust, fan, or vent. Setting near open windows will cause the scent to escape the space. Work with the natural airflow of the space.

Try a variety of locations and settings until you are happy with scent coverage. Give the AroMax Pro a little time to adjust to the new location and setting before changing it again

## Setting Scent Intensity

Once the Aromatica360 Aromatica oil is placed in the device, basic operation is simply adjusting the scent level to match the room size, ambience or occasion. Simply turn the machine on using the intensity buttons. Starting at level 1, after a few minutes, you will experience the scent spreading around your space. If needed, adjust accordingly. Once you have chosen the right setting, you should only have to adjust slightly with different Aromatica oils.

Keep nose clear from the scent output when the device is operating. Instead, waft air towards nose to experience the full Aromatica oil scent.

When changing the scent level, give the AroMax Pro some time to equalize the scent level throughout the space before you decide if you need to adjust.

## Intensity grade and consumption

Grade	work(s)	intervals(s)	Consumption(ml/h)
G1	15s	300s	0.3
G2	15s	150s	0.4
G3	20s	120s	0.6
G4	20s	85s	0.7
G5	25s	80s	0.8
G6	30s	75s	1.0
G7	30s	60s	1.1
G8	30s	50s	1.2
G9	30s	40s	1.3
G10	30s	33s	1.5
G11	33s	30s	1.7
G12	40s	30s	1.9
G13	50s	30s	2.2
G14	60s	30s	2.4
G15	75s	30s	2.6
G16	80s	25s	2.8
G17	85s	20s	3.0
G18	120s	20s	3.3
G19	150s	15s	3.5
G20	300s	15s	3.7

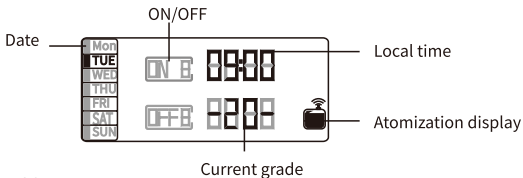
▲ Increase the grade

▼ Decrease the grade

PS: 1. The date shown above was obtained based on our testing essential oil.

2. The consumption rate of different essential oils varies, the data shown above only for reference, the actual date may prevail.

## Buttons & Setup



### Turn on the power

Connect the power and turn on the switch with a sound “Beep” coming out, then the screen shows the initial time and the current grade.

### Turn off the power

The screen will be off when turn off the switch and disconnect the power.

### Local time setting

Tap SET button and hold for 5 seconds until you hear a sound “beep” then the date value start flashing. Tap ▲ or ▼ to adjust the date, then confirm and adjust time value by taping ENT button. Tap ▲ or ▼ to adjust the time. Tap SET button to save the setting. (Shown as picture 1)

### Concentration grade setting

There are 20 grades to choose. Tap ▲ button, the grade will increase. Tap ▼, the grade will decrease. (Shown as picture 2)



SET ^ v ENT  
(1)



SET ^ v ENT  
(2)



SET ^ v ENT  
(3)

## Cleaning your diffuser

Our AroMax Pro, Aromatica oils and diffuser cleaner is a system designed to work together to provide an elevated scenting experience. In order to keep the diffuser functioning at its best, make sure to clean it every time you refill the bottle with a new scent. The nebulizer inside the diffuser can become clogged so we only recommend using our specialized Aromatica oils. Other oils may have thick, heavy base oils that could result in the diffuser malfunctioning. Using non Aromatica360 oils in your device will void the warranty.

1. After installation, please keep the machine vertical. Tilt or lie flatly may cause oil overflow. The machine efficiency may be affected if the circuit board is contaminated.
2. Shall not modify, disassemble or repair the machine arbitrarily. Any failure happens, please contact relevant technician in time.
3. This product is only applicable to our provided fragrance. Do not add other essential oils to avoid damaging the machine; nor disassemble and clean it by yourself. The matched fragrance can be purchased separately for replacement.

**Attention:** The machine is NOT the lid, when it is working, the machine should be kept upright to avoid leaking and damage to the machine. Use the matched lid for sealing.

- Do NOT use quick charger for device.
- Do NOT use or store the device above 70°C



## WARNINGS

- Only use the power adapter supplied with the device.
- Never operate the diffuser if the power adapter is damaged.
- Do not use the diffuser if any part of the device is broken.
- NEVER attempt to service, disassemble, or repair the device in anyway, other than cleaning and refilling the Aromatica oil bottle.
- When moving the device always keep it upright, do not tilt and carry securely with both hands.
- Always place unit on a stable, level surface and ensure it is over 2' away from the ceiling.
- NEVER dilute oils with water or carrier oils.
- NEVER pour water in or on the device and never operate with wet hands.
- Do not cover the device with objects or material while in use.
- Ensure power adapter is never blocked when plugged in.
- Keep nose clear from the scent output at the top of the diffuser when the device is operating.
- ALWAYS keep out of reach of small children and pets.
- Store at room temperature 68-75 F (20-23 C), 30-35% Humidity

In the event of a problem or issue, please contact us at  
or [info@aromatica360.com](mailto:info@aromatica360.com)

## Trouble shooting

Before having the machine repaired, please try to diagnose the problem first with the bellow instructions

Symptom	Remedy
Does not diffuse	<ul style="list-style-type: none"><li>- Whether the machine is in "not working period". If yes, it won't spray.</li><li>- Check whether the air pump is damaged. If yes, replace it with a new one.</li></ul>
Spray little	<ul style="list-style-type: none"><li>- Check whether the gasket is damaged or loose. Please adjust it or replace it with a new one.</li><li>- Check whether the atomized core is plugged; clear it with alcohol or replace it with a new one</li></ul>
Oil spill	<ul style="list-style-type: none"><li>- Check whether the atomized head is damaged</li></ul>
Oil overflow	<ul style="list-style-type: none"><li>- Check whether the oil bottle is loose, please install it correctly</li><li>- Check whether the gasket of the atomized head is damaged; if yes, please replace it with another one.</li><li>- Please keep the machine vertical; Tilt or lie flatly will cause the oil overflow</li></ul>

<b>Symptom</b>	<b>Possible cause</b>	<b>Solution</b>
Diffuser does not connect to Scenting App.	<ol style="list-style-type: none"> <li>Someone else is connected via Bluetooth to your device.</li> <li>Phone is too far away from diffuser.</li> </ol>	Reset the diffuser by holding down the power button till you hear 2 beeps. Reconnect to Bluetooth via the app on your phone.
Diffuser is on but it is making a gurgling noise.	<ol style="list-style-type: none"> <li>The bottle is filled too high.</li> </ol>	<ol style="list-style-type: none"> <li>Make sure the oil does not exceed the max fill line.</li> </ol>
The diffuser turned off by itself, no blue light on the base, no intensity level showing.	<ol style="list-style-type: none"> <li>The diffuser is designed to cycle the pump on and off and mists intermittently.</li> <li>The time of the day is outside of the scheduled operating periods.</li> </ol>	<ol style="list-style-type: none"> <li>Turn your diffuser on and then wait a full cycle, 10 min. Diffuser light turns off during normal running cycle.</li> <li>Check scheduling in the Scenting App.</li> </ol>
Unusual or loud noise		Turn diffuser off and contact customer care <a href="mailto:Info@aromatica360.com">Info@aromatica360.com</a>
PLEASE Contact customer care for any questions or concerns that may arise.		



## Warranty and Support

All products designed by AromTech come with a 1-year limited warranty. Failure to use Aromatica360 branded oils may cause your diffuser to malfunction or not diffuse properly in which case warranty will be void. If you have any questions or issues please reach out to our customer care experts:

**[info@aromatica360.com](mailto:info@aromatica360.com)**

360°  
**AROMATICA**  
LUXURIOUS SCENT SURROUNDING

[aromatica360.COM](http://aromatica360.COM)

[info@aromatica360.com](mailto:info@aromatica360.com)