

User Guide

AroMax

A series of overlapping, semi-transparent, wavy lines in shades of light gray and white, creating a sense of movement and depth across the lower half of the page.

360°
AROMATICA
LUXURIOUS SCENT SURROUNDING

A decorative graphic consisting of several overlapping, wavy, light gray lines that flow horizontally across the middle of the page, creating a sense of movement and depth.

Scent
is the
revival
memories of
and.
desire

Contents

- 4 ENHANCE YOUR ATMOSPHERE
- 5 FEATURES & SPECIFICATIONS
- 6 TECHNOLOGY
- 7 DIAGRAM OF PARTS
- 8 QUICK START
- 9 WHERE TO PLACE
- 10 SETTING SCENT INTENSITY
- 11 INTENSITY CYCLES & CONSUMPTION
- 12 CLEANING THE DIFFUSER
- 13 APP CONTROL & QR CODE
- 14 WARNINGS
- 15-16 TROUBLE SHOOTING
- 17 WARRANTY AND SUPPORT

Enhance Your Atmosphere

Style your home with scent

Scent is the first thing people notice when they enter your home or business. Now you can style your home ambience with your favorite Aromatica oils using the most advanced scent technology. The AroMax will forever change the way you use scent in your home or business.

With the AroMax, you can create and control an exquisite scent experience adjusted perfectly to match the size and conditions of a room. You can also change the scent depending on your mood, occasions and time of day.

The AroMax houses cold-air nebulization technology to provide the most pure and scented environment. Our nebulization technology preserves the integrity of our premium Aromatica oils creating a unique and memorable experience.

Cold-air, nebulization is an easy, heat free way to diffuse Aromatica360's aroma oil blends. Aromatica360 diffusers elevate your ambience and home decor with wonderful aromas to suit your everyday lifestyle and special occasions. Aromatica360 truly creates a unique and inviting ambience in your home or business.

Features

- Revolutionary Nebulizing technology
- Bluetooth Connectivity
- App control
- Uniform and consistent scent day after day
- Constructed from recycled aluminum
- Adjustable scent intensity
- Whisper-quiet operation
- No water
- No heat
- No residue

Size	148*148*473mm
Volume	1000ml
Weight	3.1kg
Coverage	400m ² / 1200m ³
Power	5W
Voltage	DC12V

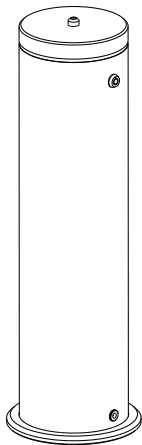
Technology

Each of our fragrance nebulizers uses patented cold-air nebulizing technology to release nanoparticles into the air that leave behind no residue.

This technology preserves the integrity of our Aromatica oils to deliver pristine, evenly distributed scent without using heat or diluting the oils in water or alcohol.

Using only Aromatica360 Aromatica oil blends will guarantee the best performance of your diffuser. There is no need to mix or dilute with water, carrier oils or alcohol. Our scents are produced to be used in the diffuser without alteration. Simply fill the bottle with your favorite Aromatica360 Aromatica oils and set the intensity.

Diagram of Parts



Oil bottle



Adaptor



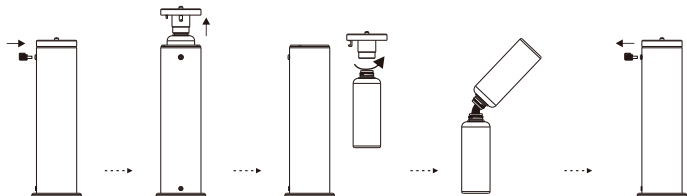
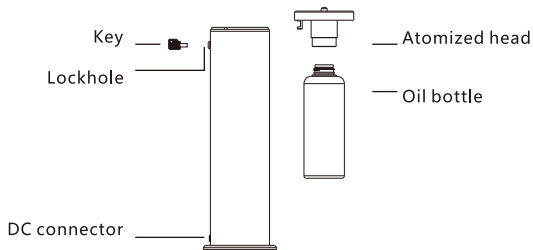
Manual



Bluetooth module

- PTFE tape:1. Tie up/ twine the atomized core when change a new one to machine.
2. Twine connector screwing to machine.

Quick start



1.Unlock the machine

2.Take out the Atomized head with bottle.

3.Unscrew the oil bottle.

4.Adding the oil.

5.Install the bottle with atomized head, and lock the machine.

Where to Place

LOCATION

The AroMax is designed to be placed in Hotels, Lobby and large areas

SCENTING COVERAGE

The AroMax can be adjusted to scent an area ranging from 10 to 400 sq.ft (1 to 400sq.m)

DEVICE LOCATION

An important element of your scenting experience is to properly position the device in the room to ensure optimal performance.

Choose the location where the Aromatica oil molecules can use the natural airflow in a room. This is particularly important with air-conditioned spaces. The best location for the AroMax is where there is good airflow.

Do not place the AroMax near an HVAC return grill, exhaust, fan, or vent. Setting near open windows will cause the scent to escape the space. Work with the natural airflow of the space.

Try a variety of locations and settings until you are happy with scent coverage. Give the AroMax a little time to adjust to the new location and setting before changing it again

Setting Scent Intensity

Once the Aromatica360 Aromatica oil is placed in the device, basic operation is simply adjusting the scent level to match the room size, ambience or occasion. Simply turn the machine on using the intensity buttons. Starting at level 1, after a few minutes, you will experience the scent spreading around your space. If needed, adjust accordingly. Once you have chosen the right setting, you should only have to adjust slightly with different Aromatica oils.

Keep nose clear from the scent output when the device is operating. Instead, waft air towards nose to experience the full Aromatica oil scent.

When changing the scent level, give the AroMax some time to equalize the scent level throughout the space before you decide if you need to adjust.

Intensity grade and consumption

	consume(ml/h)	Working & Stop time	
Grade	A301-1000ML	Working(s)	Stop(s)
G1	0.3	15s	300s
G2	0.4	15s	150s
G3	0.5	20s	120s
G4	0.6	20s	85s
G5	0.7	25s	80s
G6	0.8	30s	75s
G7	0.9	30s	60s
G8	1.0	30s	50s
G9	1.1	30s	40s
G10	1.2	30s	33s
G11	1.28	33s	30s
G12	1.36	40s	30s
G13	1.44	50s	30s
G14	1.52	60s	30s
G15	1.60	75s	30s
G16	1.68	80s	25s
G17	1.76	85s	20s
G18	1.84	120s	20s
G19	1.92	150s	15s
G20	2.00	300s	15s

Note: 1. Above data is base on testing oil in laboratory.
2. Above data is for reference only. The consumption of different oil may be different.

Cleaning your diffuser

Our AroMax, Aromatica oils and diffuser cleaner is a system designed to work together to provide an elevated scenting experience. In order to keep the diffuser functioning at its best, make sure to clean it every time you refill the bottle with a new scent. The nebulizer inside the diffuser can become clogged so we only recommend using our specialized Aromatica oils. Other oils may have thick, heavy base oils that could result in the diffuser malfunctioning. Using non Aromatica360 oils in your device will void the warranty.

1. After installation, please keep the machine vertical. Tilt or lie flatly may cause oil overflow. The machine efficiency may be affected if the circuit board is contaminated.
2. Shall not modify, disassemble or repair the machine arbitrarily. Any failure happens, please contact relevant technician in time.
3. This product is only applicable to our provided fragrance. Do not add other essential oils to avoid damaging the machine; nor disassemble and clean it by yourself. The matched fragrance can be purchased separately for replacement.

Attention: The machine is NOT the lid, when it is working, the machine should be kept upright to avoid leaking and damage to the machine. Use the matched lid for sealing.

- Do NOT use quick charger for device.
- Do NOT use or store the device above 70°C



WARNINGS

- Only use the power adapter supplied with the device.
- Never operate the diffuser if the power adapter is damaged.
- Do not use the diffuser if any part of the device is broken.
- NEVER attempt to service, disassemble, or repair the device in anyway, other than cleaning and refilling the Aromatica oil bottle.
- When moving the device always keep it upright, do not tilt and carry securely with both hands.
- Always place unit on a stable, level surface and ensure it is over 2' away from the ceiling.
- NEVER dilute oils with water or carrier oils.
- NEVER pour water in or on the device and never operate with wet hands.
- Do not cover the device with objects or material while in use.
- Ensure power adapter is never blocked when plugged in.
- Keep nose clear from the scent output at the top of the diffuser when the device is operating.
- ALWAYS keep out of reach of small children and pets.
- Store at room temperature 68-75 F (20-23 C), 30-35% Humidity

In the event of a problem or issue, please contact us at
or info@aromatica360.com

Trouble shooting

Before having the machine repaired, please try to diagnose the problem first with the bellow instructions

Symptom	Remedy
Does not diffuse	<ul style="list-style-type: none">- Whether the machine is in "not working period". If yes, it won't spray.- Check whether the air pump is damaged. If yes, replace it with a new one.
Spray little	<ul style="list-style-type: none">- Check whether the gasket is damaged or loose. Please adjust it or replace it with a new one.- Check whether the atomized core is plugged; clear it with alcohol or replace it with a new one
Oil spill	<ul style="list-style-type: none">- Check whether the atomized head is damaged
Oil overflow	<ul style="list-style-type: none">- Check whether the oil bottle is loose, please install it correctly- Check whether the gasket of the atomized head is damaged; if yes, please replace it with another one.- Please keep the machine vertical; Tilt or lie flatly will cause the oil overflow

Symptom	Possible cause	Solution
Diffuser does not connect to Scenting App.	<ol style="list-style-type: none"> Someone else is connected via Bluetooth to your device. Phone is too far away from diffuser. 	Reset the diffuser by holding down the power button till you hear 2 beeps. Reconnect to Bluetooth via the app on your phone.
Diffuser is on but it is making a gurgling noise.	<ol style="list-style-type: none"> The bottle is filled too high. 	<ol style="list-style-type: none"> Make sure the oil does not exceed the max fill line.
The diffuser turned off by itself, no blue light on the base, no intensity level showing.	<ol style="list-style-type: none"> The diffuser is designed to cycle the pump on and off and mists intermittently. The time of the day is outside of the scheduled operating periods. 	<ol style="list-style-type: none"> Turn your diffuser on and then wait a full cycle, 10 min. Diffuser light turns off during normal running cycle. Check scheduling in the Scenting App.
Unusual or loud noise		Turn diffuser off and contact customer care Info@aromatica360.com
PLEASE Contact customer care for any questions or concerns that may arise.		

Warranty and Support

All products designed by AromTech come with a 1-year limited warranty. Failure to use Aromatica360 branded oils may cause your diffuser to malfunction or not diffuse properly in which case warranty will be void. If you have any questions or issues please reach out to our customer care experts:

info@aromatica360.com

360°
AROMATICA
LUXURIOUS SCENT SURROUNDING

aromatica360.COM

info@aromatica360.com